

OUR GREATER SYDNEY 2056

Georges River Council

Council snapshot of the revised draft *South District Plan*

The vision for Greater Sydney as a metropolis of three cities – the Western Parkland City, the Central River City and the Eastern Harbour City – means residents in the South District will have quicker and easier access to a wider range of jobs, housing types and activities.

The South District is part of the Eastern Harbour City. It connects to the Central River City through Canterbury-Bankstown Local Government Area.

Its extensive rail and road network, proximity to Australia's major trade gateways, along with the social connections of its multicultural communities provide links to the region, the country and the world.

The District is a place of great natural beauty and diverse communities, where jobs are easy to get to, nature is close at hand, and a variety of housing forms and affordability levels support a diverse community.

The draft *South District Plan* guides the growth of the District within the context of Greater Sydney's three cities to improve the District's social, economic and environmental assets.

The draft District Plan guides this growth with new homes and knowledge-intensive jobs as an impetus for public investment in infrastructure. New infrastructure will support the collaboration area focused on the Australian Nuclear Science and Technology Organisation, the Kogarah health and education precinct and the emerging health and education precinct at Bankstown-Lidcombe.

Infrastructure will support a greater range of housing types with urban renewal along the Sydenham to Bankstown corridor, in the Campsie-Canterbury, Belmore-Lakemba and Riverwood priority precincts as well as precincts close to centres and railway stations.

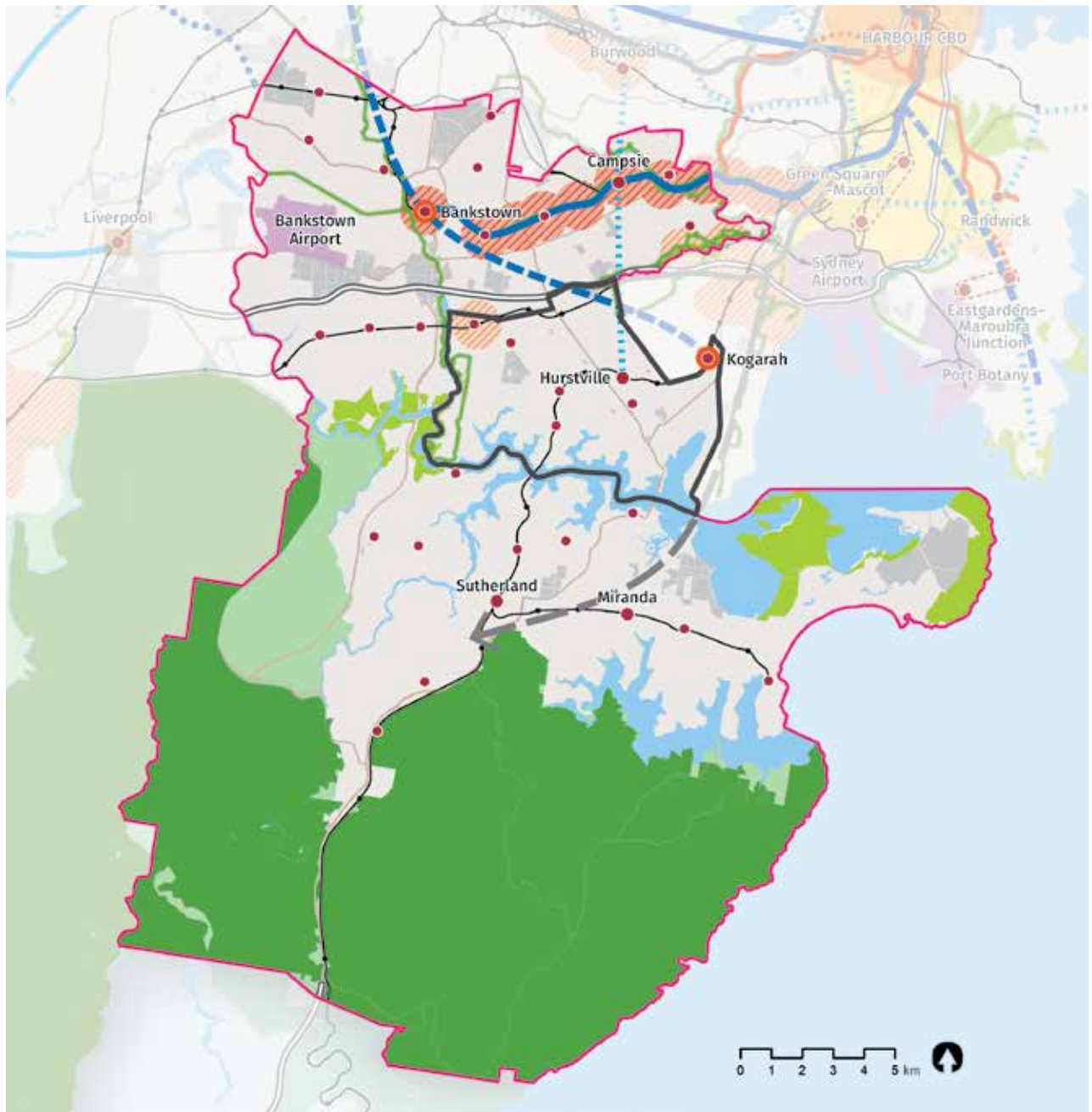
The District will build on its advantages – close to both Sydney Airport and Port Botany as well as the Illawarra and Port Kembla – through infrastructure investments such as the F6 Extension,

M5 Motorway and Sydney Metro City & Southwest. It will also capitalise on Bankstown Airport, its connections to Parramatta, and in the longer term to Liverpool and the Western Sydney Airport.

The District's local areas will benefit from new or enhanced infrastructure to create pleasant, leafy centres, enhanced open spaces and eat streets. This will protect residents' existing lifestyle assets.

The District's landscape features, including the beaches, waterways, bushland and national parks, biodiversity such as the internationally important Ramsar-listed wetlands at Towra Point, and the high number of endangered species, will be protected for the sustainability of the environment and to continue to attract tourists.

Georges River Council



Local Government Boundary	Economic Corridor	Protected Natural Area	On Street Rapid Transit
District Boundary	Trade Gateway	Metropolitan Rural Area	Motorway
Metropolitan City Centre	Industrial Land	Major Urban Parkland and Reserve	Committed Motorway
Metropolitan City Cluster	Land Release Area	Waterways	Road Investigation 0-10 years
Health and Education Precinct	Transit Oriented Development	Train Station	Green Grid Priority Project
Strategic Centre	Urban Renewal Area	Committed Train Link	
Local Centre	Urban Area	Train Link / Mass Transit Investigation 10-20 years	

NOTE: Committed projects of: Western Harbour Tunnel & Beaches Link, F6 – WestConnex to President Avenue Kogarah, Parramatta Light Rail Stage 2 and Sydney Metro West are subject to final business case, no investment decision yet. Routes and stops for some transport corridors/projects are indicative only.

Housing Georges River Council

 **Housing supply target (2016-2021): 4,800**

 Actions	Responsibility
<p>15. Prepare local or district housing strategies that address the following:</p> <ul style="list-style-type: none"> a. the delivery of five-year housing supply targets for each local government area b. the delivery of 6-10 year (when agreed) housing supply targets for each local government area c. capacity to contribute to the longer term 20-year strategic housing target for the District d. housing strategy requirements outlined in Objective 10 of the draft <i>Greater Sydney Region Plan</i> that include: <ul style="list-style-type: none"> i. creating capacity for more housing in the right locations ii. supporting planning and delivery of priority growth areas and precincts as relevant to each local government area iii. supporting investigation of opportunities for alignment with investment in regional and district infrastructure iv. supporting the role of centres. 	Georges River Council
<p>16. Prepare Affordable Rental Housing Target schemes.</p>	Councils and other planning authorities


Hurstville Strategic Centre

 <u>Job targets</u>	2016 estimate:	2036 baseline target:	2036 higher target:
	11,600	15,000	20,000

 Actions	Responsibility
<p>34. Strengthen Hurstville through approaches that:</p> <ul style="list-style-type: none"> a. encourage and support shopping centre improvements to better integrate with the surrounding public spaces b. create a strong sense of place by celebrating Hurstville's cultural diversity c. support the expansion of the hospitals in the centre and the growth of allied health services d. encourage new lifestyle and entertainment uses to activate streets and grow the night-time economy e. build on the centre's administrative and civic role f. protect existing commercial lands for future employment opportunities g. facilitate the attraction of office and commercial floor space and provide opportunities to allow commercial and retail activities to innovate h. recognise and support the role of Forest Road as a movement corridor and as an 'eat street' i. encourage activation of secondary streets. 	Georges River Council, other planning authorities and State agencies

Kogarah Strategic Centre

 <u>Job targets</u>	2016 estimate:	2036 baseline target:	2036 higher target:
	11,800	16,000	20,500

 Actions	Responsibility
<p>35. Strengthen Kogarah through approaches that:</p> <ul style="list-style-type: none"> a. support growth of the health and education precinct b. encourage new lifestyle and entertainment uses to activate streets and grow the night-time economy c. facilitate the attraction of office and commercial floor space and provide opportunities to allow commercial and retail activities to innovate d. encourage activation of secondary streets. 	Georges River Council, other planning authorities and State agencies

The draft *South District Plan* implements the objectives, strategies and actions of the draft *Greater Sydney Region Plan*, by outlining how they will be applied through a set of planning priorities and actions for the District.

Planning Priorities for the South District

- **Planning Priority S1:** Planning for a city supported by infrastructure
- **Planning Priority S2:** Working through collaboration
- **Planning Priority S3:** Providing services and social infrastructure to meet people's changing needs
- **Planning Priority S4:** Fostering healthy, creative, culturally rich and socially connected communities
- **Planning Priority S5:** Providing housing supply, choice and affordability, with access to jobs and services
- **Planning Priority S6:** Creating and renewing great places and local centres, and respecting the District's heritage
- **Planning Priority S7:** Growing and investing in the ANSTO research and innovation precinct
- **Planning Priority S8:** Growing and investing in health and education precincts and Bankstown Airport trade gateway as economic catalysts for the District
- **Planning Priority S9:** Growing investment, business opportunities and jobs in strategic centres
- **Planning Priority S10:** Protecting and managing industrial and urban services land
- **Planning Priority S11:** Supporting growth of targeted industry sectors
- **Planning Priority S12:** Delivering integrated land use and transport planning and a 30-minute city
- **Planning Priority S13:** Protecting and improving the health and enjoyment of the District's waterways
- **Planning Priority S14:** Protecting and enhancing bushland, biodiversity and scenic and cultural landscapes and better managing rural areas
- **Planning Priority S15:** Increasing urban tree canopy cover and delivering Green Grid connections
- **Planning Priority S16:** Delivering high quality open space
- **Planning Priority S17:** Reducing carbon emissions and managing energy, water and waste efficiently
- **Planning Priority S18:** Adapting to the impacts of urban and natural hazards and climate change

How to be involved

The revised draft *South District Plan* is on formal public exhibition until 15th of December 2017. You can read the entire updated draft District Plan at: www.greater.sydney

Find out more about making a submission by visiting: www.greater.sydney/submissions

Before making a submission, please read the privacy statement at: www.greater.sydney/privacy